

14

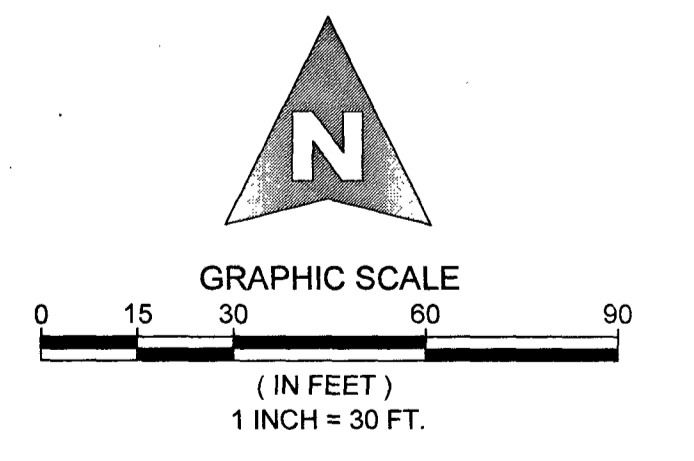
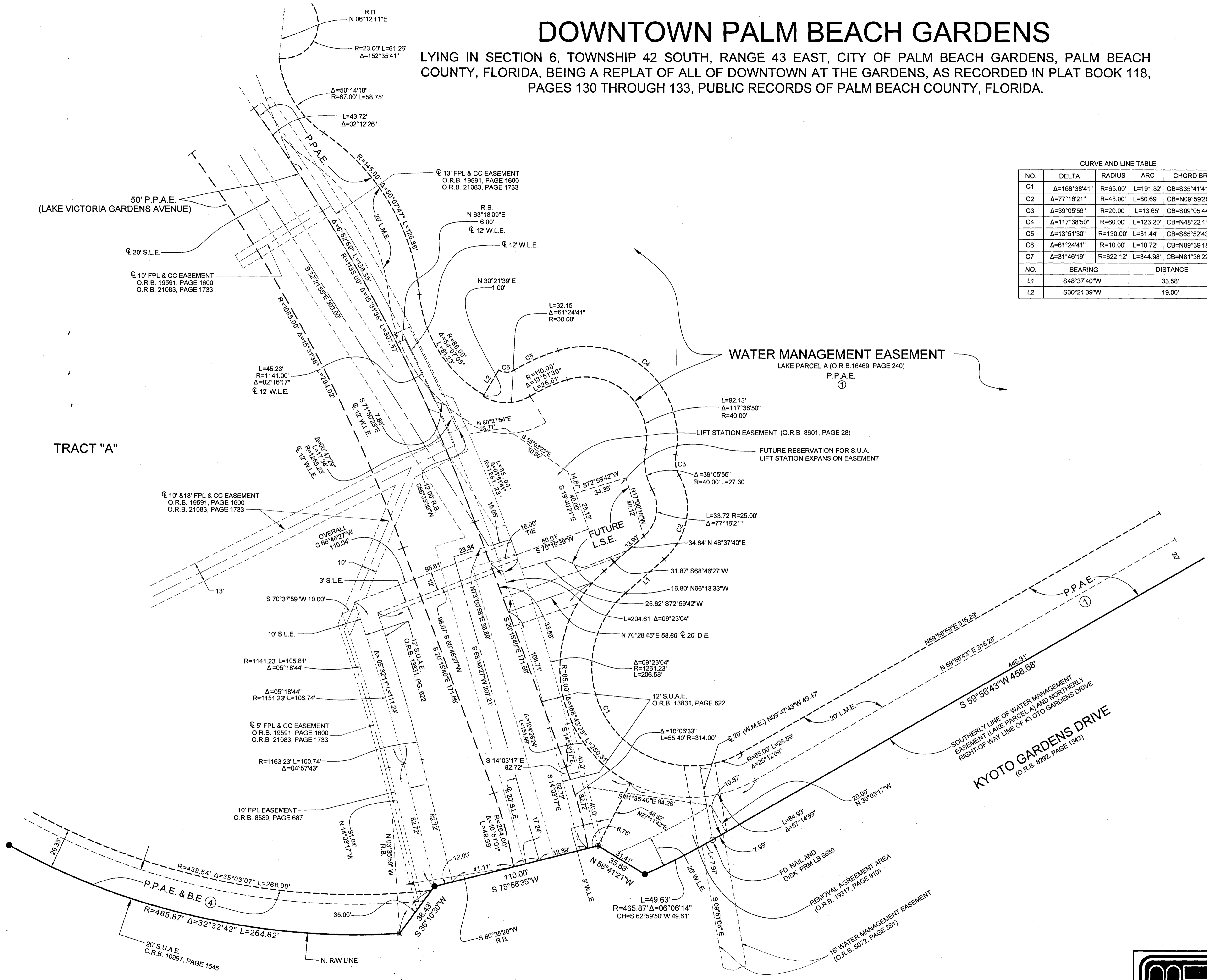
DOWNTOWN PALM BEACH GARDENS

LYING IN SECTION 6, TOWNSHIP 42 SOUTH, RANGE 43 EAST, CITY OF PALM BEACH GARDENS, PALM BEACH COUNTY, FLORIDA, BEING A REPLAT OF ALL OF DOWNTOWN AT THE GARDENS, AS RECORDED IN PLAT BOOK 118, PAGES 130 THROUGH 133, PUBLIC RECORDS OF PALM BEACH COUNTY, FLORIDA.

CURVE AND LINE TABLE

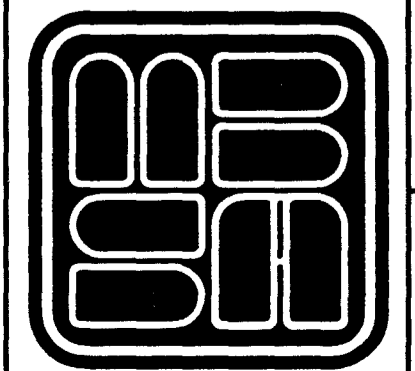
NO.	DELTA	RADIUS	ARC	CHORD BRG.
C1	Δ=168°38'41"	R=65.00'	L=191.32'	CB=S35°41'41"E
C2	Δ=77°16'21"	R=45.00'	L=60.69'	CB=N09°59'29"E
C3	Δ=39°05'58"	R=20.00'	L=13.65'	CB=S09°05'44"E
C4	Δ=117°38'50"	R=60.00'	L=123.20'	CB=N48°22'11"W
C5	Δ=13°51'30"	R=130.00'	L=31.44'	CB=S65°52'43"W
C6	Δ=61°24'41"	R=10.00'	L=10.72'	CB=N89°39'18"E
C7	Δ=31°46'19"	R=622.12'	L=344.98'	CB=N81°36'22"W

NO.	BEARING	DISTANCE
L1	S48°37'40"W	33.58'
L2	S30°21'39"W	19.00'



SHEET 7 OF 7

DETAIL "LAKE VICTORIA GARDENS AVENUE"



MICHAEL B. SCHORAH & ASSOCIATES, INC.
 1850 FOREST HILL BLVD., SUITE 206
 WEST PALM BEACH, FLORIDA 33406
 EB# 2438 TEL. (561) 968-0080 FAX. (561) 642-9726 LB# 2438

DOWNTOWN
PALM BEACH GARDENS